



OfficeConnect®

OfficeConnect ADSL Wireless 54Mbps 11g Firewall Router

User Guide

Model WL-552

<http://www.3com.com/>

Part No. DUA100A-72AAA02

Published February 2006



3Com Corporation
350 Campus Drive,
Marlborough, MA
USA 01752-3064

Copyright © 2004, 2005, 2006, 3Com Corporation. All rights reserved. No part of this documentation may be reproduced in any form or by any means or used to make any derivative work (such as translation, transformation, or adaptation) without written permission from 3Com Corporation.

3Com Corporation reserves the right to revise this documentation and to make changes in content from time to time without obligation on the part of 3Com Corporation to provide notification of such revision or change.

3Com Corporation provides this documentation without warranty, term, or condition of any kind, either implied or expressed, including, but not limited to, the implied warranties, terms or conditions of merchantability, satisfactory quality, and fitness for a particular purpose. 3Com may make improvements or changes in the product(s) and/or the program(s) described in this documentation at any time.

If there is any software on removable media described in this documentation, it is furnished under a license agreement included with the product as a separate document, in the hard copy documentation, or on the removable media in a directory file named LICENSE.TXT or !LICENSE.TXT. If you are unable to locate a copy, please contact 3Com and a copy will be provided to you.

UNITED STATES GOVERNMENT LEGEND

If you are a United States government agency, then this documentation and the software described herein are provided to you subject to the following:

All technical data and computer software are commercial in nature and developed solely at private expense. Software is delivered as "Commercial Computer Software" as defined in DFARS 252.227-7014 (June 1995) or as a "commercial item" as defined in FAR 2.101(a) and as such is provided with only such rights as are provided in 3Com's standard commercial license for the Software. Technical data is provided with limited rights only as provided in DFAR 252.227-7015 (Nov 1995) or FAR 52.227-14 (June 1987), whichever is applicable. You agree not to remove or deface any portion of any legend provided on any licensed program or documentation contained in, or delivered to you in conjunction with, this User Guide.

Unless otherwise indicated, 3Com registered trademarks are registered in the United States and may or may not be registered in other countries.

3Com, and the 3Com logo are registered trademarks of 3Com Corporation.

Intel and Pentium are registered trademarks of Intel Corporation. Microsoft, MS-DOS, Windows, and Windows NT are registered trademarks of Microsoft Corporation. Novell and NetWare are registered trademarks of Novell, Inc. UNIX is a registered trademark in the United States and other countries, licensed exclusively through X/Open Company, Ltd.

Netscape Navigator is a registered trademark of Netscape Communications.

JavaScript is a trademark of Sun Microsystems

Wi-Fi and the Wi-Fi logo are registered trademarks of the Wi-Fi Alliance.

IEEE and 802 are trademarks of the Institute of Electrical and Electronics Engineers, Inc.

All other company and product names may be trademarks of the respective companies with which they are associated.

ENVIRONMENTAL STATEMENT

It is the policy of 3Com Corporation to be environmentally-friendly in all operations. To uphold our policy, we are committed to:

Establishing environmental performance standards that comply with national legislation and regulations.

Conserving energy, materials and natural resources in all operations.

Reducing the waste generated by all operations. Ensuring that all waste conforms to recognized environmental standards. Maximizing the recyclable and reusable content of all products.

Ensuring that all products can be recycled, reused and disposed of safely.

Ensuring that all products are labelled according to recognized environmental standards.

Improving our environmental record on a continual basis.

End of Life Statement

3Com processes allow for the recovery, reclamation and safe disposal of all end-of-life electronic components.

Regulated Materials Statement

3Com products do not contain any hazardous or ozone-depleting material.

Environmental Statement about the Documentation

The documentation for this product is printed on paper that comes from sustainable, managed forests; it is fully biodegradable and recyclable, and is completely chlorine-free. The varnish is environmentally-friendly, and the inks are vegetable-based with a low heavy-metal content.

CONTENTS

ABOUT THIS GUIDE

- Naming Convention 7
- Conventions 8
- Feedback About This User Guide 8
- Related Documentation 9

INTRODUCING THE ROUTER

- OfficeConnect ADSL Wireless 11g Firewall Router 11
- Router Advantages 13
- Package Contents 13
- Minimum System and Component Requirements 14
- Physical Features 14

INSTALLING THE ROUTER

- Introduction 17
 - Safety Information 17
- Positioning the Router 17
 - Using the Rubber Feet 18
- Powering Up the Router 18
- Connecting the Router 18

SETTING UP YOUR COMPUTERS

- Obtaining an IP Address Automatically 23
 - Windows 2000 23
 - Windows XP 25
 - Windows 98/ME 25
 - Macintosh 25
- Disabling PPPoE and PPTP Client Software 26
- Disabling Web Proxy 26

RUNNING THE SETUP WIZARD

| | |
|--------------------------------------|----|
| Accessing the Setup Wizard | 27 |
| Setup Wizard - Change Password | 30 |
| Setup Wizard - Time and Time Zone | 30 |
| Setup Wizard - Connection Type | 31 |
| Setup Wizard - LAN Settings | 36 |
| Setup Wizard - Wireless Settings | 37 |
| Setup Wizard - Configuration Summary | 38 |

CONFIGURING THE ROUTER

| | |
|---|----|
| Navigating Through the Router Configuration Pages | 39 |
| Main Menu | 39 |
| Welcome Screen | 39 |
| Status | 39 |
| LAN Settings | 40 |
| LAN Settings | 40 |
| DHCP Clients List | 41 |
| Wireless Settings | 43 |
| Configuration | 44 |
| Encryption | 45 |
| Connection Control | 50 |
| Client List | 51 |
| WDS Settings | 51 |
| Advance | 52 |
| Profile | 53 |
| Internet Settings | 54 |
| ATM PVC | 54 |
| DNS | 65 |
| Hostname & Clone MAC address | 66 |
| Firewall | 67 |
| SPI | 67 |
| Special Applications | 71 |
| Virtual Servers | 72 |
| DMZ | 73 |
| Schedule Rule | 74 |
| PC Privileges | 75 |

| | |
|--------------------|-----|
| URL Filter | 77 |
| Server Control | 79 |
| Quality of Service | 81 |
| QoS Settings | 81 |
| Traffic Mapping | 81 |
| Traffic Statistics | 82 |
| Advanced | 83 |
| Security | 83 |
| Static Routes | 86 |
| RIP | 87 |
| DDNS | 88 |
| SNMP | 90 |
| Syslog | 91 |
| Proxy ARP | 92 |
| System Tools | 93 |
| Restart Router | 93 |
| Configuration | 93 |
| Upgrade | 94 |
| Time Zone | 95 |
| Ping | 96 |
| Traceroute | 97 |
| DNS Lookup | 98 |
| Status and Logs | 99 |
| Status | 99 |
| ADSL Status | 99 |
| ATM PVC Status | 100 |
| Routing Table | 100 |
| Logs | 101 |
| Support/Feedback | 102 |
| Support | 102 |
| Feedback | 102 |

TROUBLESHOOTING

| | |
|--|-----|
| Basic Connection Checks | 103 |
| Browsing to the Router Configuration Screens | 103 |
| Connecting to the Internet | 104 |
| Forgotten Password and Reset to Factory Defaults | 104 |

| | |
|------------------------------------|-----|
| Wireless Networking | 105 |
| Recovering from Corrupted Software | 107 |
| Frequently Asked Questions | 108 |

IP ADDRESSING

| | |
|---|-----|
| The Internet Protocol Suite | 109 |
| Managing the Router over the Network | 109 |
| IP Addresses and Subnet Masks | 109 |
| How does a Device Obtain an IP Address and Subnet Mask? | 111 |
| DHCP Addressing | 111 |
| Static Addressing | 111 |
| Auto-IP Addressing | 111 |

TECHNICAL SPECIFICATIONS

| | |
|---|-----|
| OfficeConnect ADSL Wireless 11g Firewall Router | 113 |
| Standards | 115 |

SAFETY INFORMATION

END USER SOFTWARE LICENSE AGREEMENT

OBTAINING SUPPORT FOR YOUR PRODUCT

| | |
|--|-----|
| Register Your Product | 123 |
| Purchase Value-Added Services | 123 |
| Troubleshoot Online | 124 |
| Access Software Downloads | 124 |
| Telephone Technical Support and Repair | 124 |
| Contact Us | 125 |

GLOSSARY

REGULATORY NOTICES

INDEX

ABOUT THIS GUIDE

This guide describes how to install and configure the OfficeConnect ADSL Wireless 11g Firewall Router (3CRWD100x-72).

This guide is intended for use by those responsible for installing and setting up network equipment; consequently, it assumes a basic working knowledge of LANs (Local Area Networks) and Internet Routers.



If a release note is shipped with the ADSL 11g Wireless Router and contains information that differs from the information in this guide, follow the information in the release note.

Most user guides and release notes are available in Adobe Acrobat Reader Portable Document Format (PDF) on the 3Com World Wide Web site:

<http://www.3com.com>

Naming Convention

Throughout this guide, the OfficeConnect ADSL Wireless 11g Firewall Router is referred to as the "Router".

Category 3 and Category 5 Twisted Pair Cables are referred to as Twisted Pair Cables throughout this guide.

Conventions

[Table 1](#) and [Table 2](#) list conventions that are used throughout this guide.

Table 1 Notice Icons

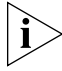


| Icon | Notice Type | Description |
|---|------------------|---|
|  | Information note | Information that describes important features or instructions. |
|  | Caution | Information that alerts you to potential loss of data or potential damage to an application, system, or device. |
|  | Warning | Information that alerts you to potential personal injury. |

Table 2 Text Conventions

| Convention | Description |
|------------------------------|--|
| The words "enter" and "type" | When you see the word "enter" in this guide, you must type something, and then press Return or Enter. Do not press Return or Enter when an instruction simply says "type." |
| Keyboard key names | If you must press two or more keys simultaneously, the key names are linked with a plus sign (+). Example: Press Ctrl+Alt+Del |
| Words in <i>italics</i> | Italics are used to: <ul style="list-style-type: none"> ■ Emphasize a point. ■ Denote a new term at the place where it is defined in the text. ■ Identify menu names, menu commands, and software button names. Examples: From the <i>Help</i> menu, select <i>Contents</i>. Click <i>OK</i>. |

Feedback About This User Guide

Your suggestions are very important to us. They will help make our documentation more useful to you. Please e-mail comments about this document to 3Com at:

pddtechpubs_comments@3com.com

Please include the following information when commenting:

- Document title
- Document part number (on the title page)
- Page number (if appropriate)

Example:

- OfficeConnect ADSL Wireless 11g Firewall Router User Guide
- Part Number DUA100A-72AAA01
- Page 24



Do not use this e-mail address for technical support questions. For information about contacting Technical Support, please refer to [Appendix C](#).

Related Documentation

In addition to this guide, each Router document set includes one Installation Guide. This guide contains the instructions you need to install and configure your Router.

1

INTRODUCING THE ROUTER

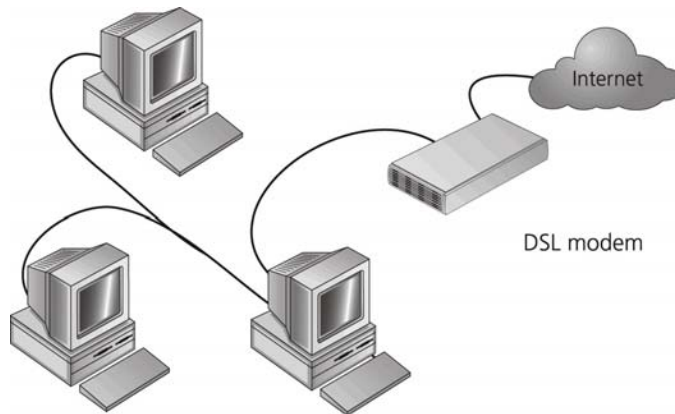
Welcome to the world of networking with 3Com®. In the modern business environment, communication and sharing information is crucial. Computer networks have proved to be one of the fastest modes of communication but, until recently, only large businesses could afford the networking advantage.

OfficeConnect ADSL Wireless 11g Firewall Router

The OfficeConnect ADSL Wireless 11g Firewall Router is designed to provide a cost-effective means of sharing a single broadband Internet connection amongst several wired and wireless computers. The Router also provides protection in the form of an electronic “firewall” preventing anyone outside of your network from seeing your files or damaging your computers. The Router can also prevent your users from accessing Web sites which you find unsuitable.

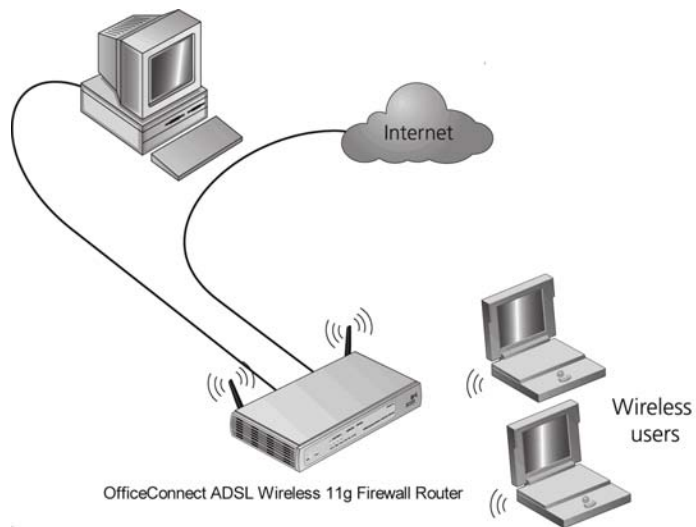
[Figure 1](#) shows an example network without a Router. In this network, only one computer is connected to the Internet. This computer must always be powered on for the other computers on the network to access the Internet.

Figure 1 Example Network Without a Router



When you use the Router in your network ([Figure 2](#)), it becomes your connection to the Internet. Connections can be made directly to the Router, or to an OfficeConnect Switch or Hub, expanding the number of computers you can have in your network.

Figure 2 Example Network Using a Firewall Router



Router Advantages

The advantages of the Router include:

- Shared Internet connection for both wired and wireless computers
- High speed 802.11g wireless networking
- No need for a dedicated, “always on” computer serving as your Internet connection
- Cross-platform operation for compatibility with Windows, Unix and Macintosh computers
- Easy-to-use, Web-based setup and configuration
- Provides centralization of all network address settings (DHCP)
- Acts as a Virtual server to enable remote access to Web, FTP, and other services on your network
- Security — Firewall protection against Internet hacker attacks and encryption to protect wireless network traffic

Package Contents

The Router kit includes the following items:

- One OfficeConnect ADSL Wireless 11g Firewall Router
- One power adapter for use with the Router
- Four rubber feet
- One Telephone Cable
- One CD-ROM containing this User Guide
- Installation Guide
- One Support and Safety Information Sheet
- One Warranty Flyer

If any of these items are missing or damaged, please contact your retailer.

Minimum System and Component Requirements

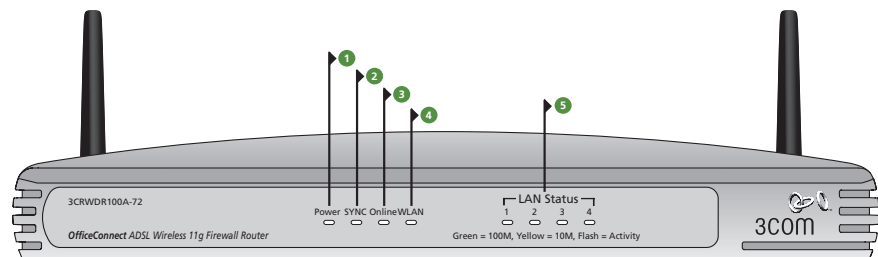
Your Router requires that the computer(s) and components in your network be configured with at least the following:

- A computer with an operating system that supports TCP/IP networking protocols (for example Windows 98/NT/Me/2000/XP, Unix, Mac OS 8.5 or higher).
- An Ethernet 10 Mbps or 10/100 Mbps NIC for each computer to be connected to the four-port switch on your Router.
- An 802.11b or 802.11g wireless NIC.
- An active ADSL subscription and connection.
- A Web browser that supports JavaScript, such as Netscape 4.7 or higher, Internet Explorer 5.0 or higher, or Mozilla 1.2.1 or higher.

Physical Features

The front panel of the Router contains a series of indicator lights (LEDs) that help describe the state of various networking and connection operations.

Figure 3 Router - Front Panel



1 Power LED

Green

Indicates that the Router is powered on.

2 SYNC LED

Green

If the LED is on it indicates that DSL connection is present. This LED flashes during configuration at power up.

3 Online LED

Green

If this LED is on, your username/password has been authenticated successfully with your ISP.

4 Wireless LAN (WLAN) Status LED

Green

If the LED is on it indicates that wireless networking is enabled. If the LED is flashing, the link is OK and data is being transmitted or received. If the LED is off, the Wireless LAN has been disabled in the Router, or there is a problem. Refer to [Chapter 6 "Troubleshooting"](#).

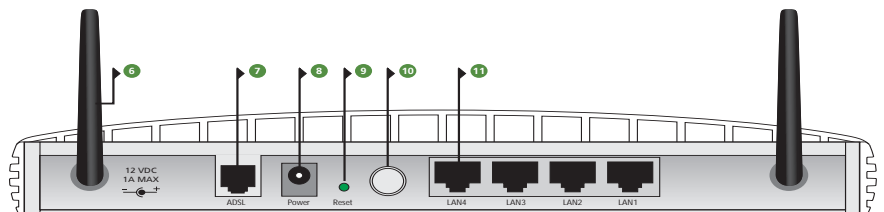
5 LAN Status LEDs

Green

If the LED is on, the link between the port and the next piece of network equipment is OK. If the LED is flashing, the link is OK and data is being transmitted or received. If the LED is off, nothing is connected, or the connected device is switched off, or there is a problem with the connection (refer to [Chapter 6 "Troubleshooting"](#)). The port will automatically adjust to the correct speed and duplex.

The rear panel ([Figure 4](#)) of the Router contains four LAN ports, one ADSL port, a reset button, a power switch, and a power adapter socket.

Figure 4 Router - Rear Panel



6 Wireless Antennae

The antennae on the product should be placed in a 'V' position when initially installed.



CAUTION: Do not force the antennae beyond their mechanical stops. Rotating the antennae further may cause damage.

7 ADSL Port

Using the RJ11 cable provided, you should connect your Router to the telephone socket via a splitter.

8 Power Adapter Socket

Only use the power adapter that is supplied with this Router. Do not use any other adapter.

9 Reset Button

If you want to reset your Router to factory default settings, and cannot access the web management interface (for example, due to a lost password), then you may use this button. Refer to [“Forgotten Password and Reset to Factory Defaults”](#) on [page 104](#) for further details.

10 Power Switch

Push this switch to the “in” position to turn the unit on. In the “out” position, the unit is off.

11 Ethernet Ports

Using suitable RJ45 cables, you can connect your Router to a computer, or to any other piece of equipment that has an Ethernet connection (for example, a hub or a switch). These ports have an automatic MDI/MDIX feature, which means either straight-through or a crossover cable can be used.

2

INSTALLING THE ROUTER

Introduction

This chapter will guide you through a basic installation of the Router, including:

- Connecting the Router to the Internet.
- Connecting the Router to your network.
- Setting up your computers for networking with the Router.

Safety Information

Please note the following:



WARNING: Please read the "[Safety Information](#)" section in [Appendix C](#) before you start.



VORSICHT: Bitte lesen Sie den Abschnitt "[Wichtige Sicherheitshinweise](#)" sorgfältig durch, bevor Sie das Gerät einschalten.



AVERTISSEMENT: Veuillez lire attentivement la section "[Consignes importantes de sécurité](#)" avant de mettre en route.

Positioning the Router

You should place the Router in a location that:

- is conveniently located for connection to the telephone socket.
- is centrally located to the wireless computers that will connect to the Router. A suitable location might be on top of a high shelf or similar furniture to optimize wireless connections to computers in both horizontal and vertical directions, allowing wider coverage.
- allows convenient connection to the computers that will be connected to the four LAN ports on the rear panel, if desired.
- allows easy viewing of the front panel LED indicator lights, and access to the rear panel connectors, if necessary.

When positioning your Router, ensure:

- It is out of direct sunlight and away from sources of heat.
- Cabling is away from power lines, fluorescent lighting fixtures, and sources of electrical noise such as radios, transmitters and broadband amplifiers.
- Water or moisture cannot enter the case of the unit.
- Air flow around the unit and through the vents in the side of the case is not restricted. 3Com recommends you provide a minimum of 25 mm (1 in.) clearance.

Using the Rubber Feet

Use the four self-adhesive rubber feet to prevent your Router from moving around on your desk or when stacking with flat top units. Only stick the feet to the marked areas at each corner of the underside of your Router.

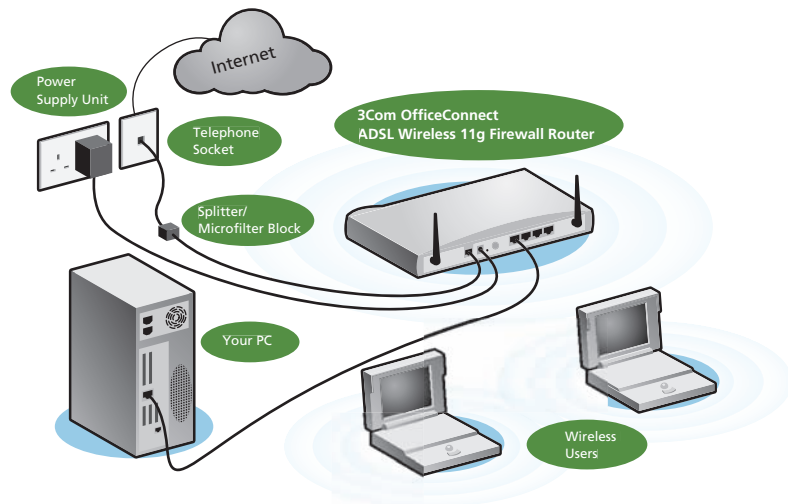
Powering Up the Router

To power up the Router:

- 1 Plug the power adapter into the power adapter socket located on the back panel of the Router.
- 2 Plug the power adapter into a standard electrical wall socket.
- 3 Press the power button located on the back of the Router.

Connecting the Router

The first step for installing your Router is to physically connect it to the telephone socket and then connect it to a computer in order to be able to access the Internet. See [Figure 5](#):

Figure 5 Connecting the Router

- 1 Run the provided telephone cable from the wall jack providing ADSL service to the ADSL port on your ADSL Router. When inserting an ADSL RJ-11 plug, be sure the tab on the plug clicks into position to ensure that it is properly seated. If you are using splitterless ADSL service, add low-pass filters between the ADSL wall jack and your telephones. (These filters pass voice signals through but filter data signals out.)
- 2 Then:
 - If you are using a full-rate (G.dmt) connection, your service provider will attach the outside ADSL line to a data/voice splitter. In this case you can connect your phones and computer directly to the splitter as shown below ([Figure 6](#)):
 - or
 - If you are using a splitterless (G.lite) connection, then your service provider will attach the outside ADSL line directly to your phone system. In this case you can connect your phones and computer directly to the incoming ADSL line, but you will have to add low-pass filters to your phones as shown below ([Figure 7](#))

Figure 6 Installing with a splitter

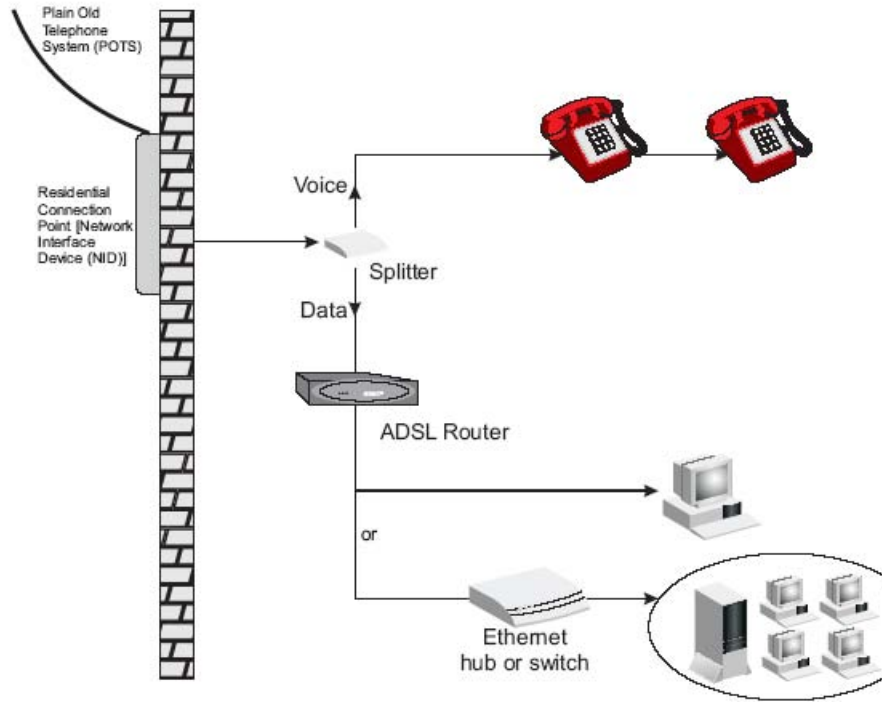
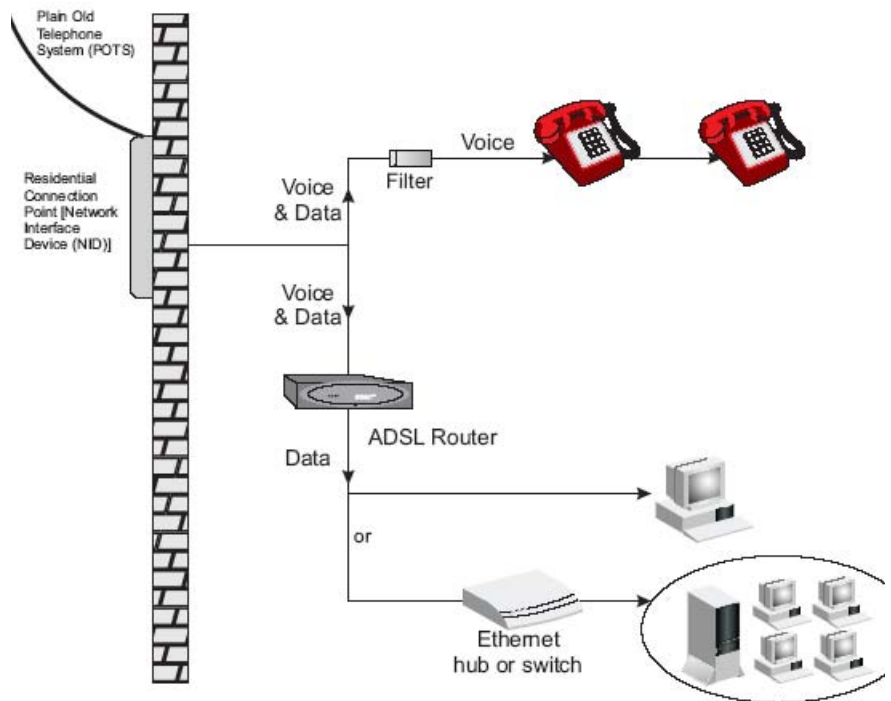


Figure 7 Installing without a splitter

You have now completed the hardware installation of your Router. Next you need to set up your computers so that they can make use of the Router to communicate with the Internet.

3Com recommends that you perform the initial Router configuration from a computer that is directly connected to one of the LAN ports.

If you configure the Router from a wireless computer, note that you may lose contact with the Router if you change the wireless configuration.

To communicate wirelessly with your Router, your wireless NIC should be set as follows:

- Encryption — none
- SSID — 3Com
- Channel — 11

3

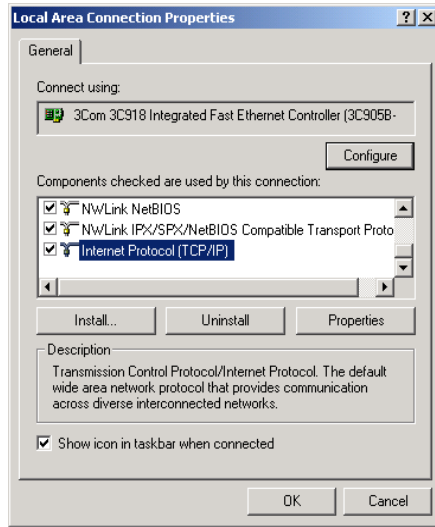
SETTING UP YOUR COMPUTERS

The Router has the ability to dynamically allocate network addresses to the computers on your network, using DHCP. However, your computers need to be configured correctly for this to take place. To change the configuration of your computers to allow this, follow the instructions in this chapter.

Obtaining an IP Address Automatically

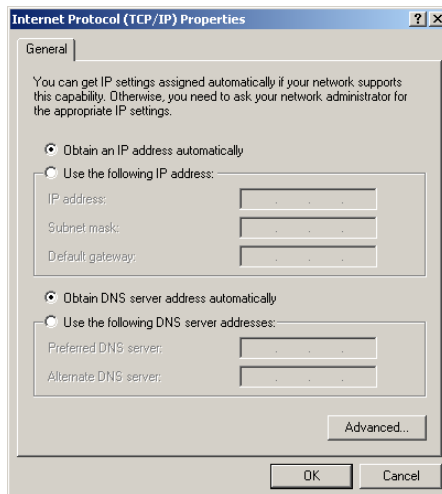
- Windows 2000** If you are using a Windows 2000-based computer, use the following procedure to change your TCP/IP settings:
- 1 From the Windows *Start* Menu, select *Settings > Control Panel*.
 - 2 Double click on *Network and Dial-Up Connections*.
 - 3 Double click on *Local Area Connection*.
 - 4 Click on *Properties*.
 - 5 A screen similar to [Figure 8](#) should be displayed. Select *Internet Protocol TCP/IP* and click on *Properties*.

Figure 8 Local Area Properties Screen



- 6 Ensure that the options *Obtain an IP Address automatically*, and *Obtain DNS server address automatically* are both selected as shown in [Figure 9](#). Click **OK**.

Figure 9 Internet Protocol (TCP/IP) Properties Screen



- 7 Restart your computer.

Windows XP

- 1 From the Windows *Start* menu, select *Control Panel*.
- 2 Click on *Network and Internet Connections*.
- 3 Click on the *Network Connections* icon.
- 4 Double click on *LAN or High Speed Connection* icon. A screen titled *Local Area Connection Status* will appear.
- 5 Select *Internet Protocol TCP/IP* and click on *Properties*.
- 6 Ensure that the options *Obtain an IP Address automatically*, and *Obtain DNS servers automatically* are both selected. Click *OK*.
- 7 Restart your computer.

Windows 98/ME

- 1 From the Windows *Start* Menu, select *Settings > Control Panel*.
- 2 Double click on *Network*. Select the *TCP/IP* item for your network card and click on *Properties*.
- 3 In the *TCP/IP* dialog, select the *IP Address* tab, and ensure that *Obtain IP address automatically* is selected. Click *OK*.

Macintosh If you are using a Macintosh computer, use the following procedure to change your *TCP/IP* settings:

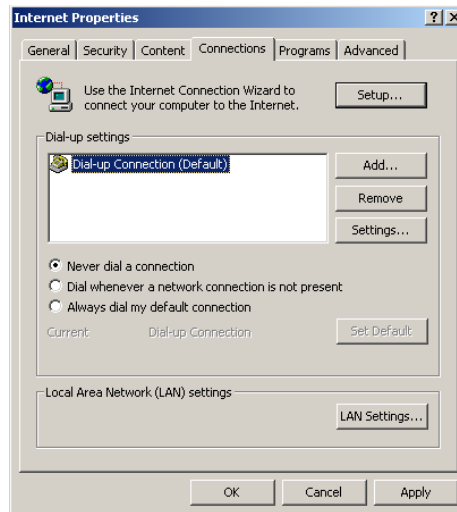
- 1 From the desktop, select *Apple Menu*, *Control Panels*, and *TCP/IP*.
- 2 In the *TCP/IP* control panel, set *Connect Via:* to *Ethernet*.
- 3 In the *TCP/IP* control panel, set *Configure:* to *Using DHCP Server*.
- 4 Close the *TCP/IP* dialog box, and save your changes.
- 5 Restart your computer.

Disabling PPPoE and PPTP Client Software

If you have PPPoE client software installed on your computer, you will need to disable it. To do this:

- 1 From the Windows *Start* menu, select *Settings > Control Panel*.
- 2 Double click on *Internet Options*.
- 3 Select the *Connections* Tab. A screen similar to [Figure 10](#) should be displayed.
- 4 Select the *Never Dial a Connection* option.

Figure 10 Internet Properties Screen



You may want to remove the PPPoE client software from your computer to free resources, as it is not required for use with the Router.

Disabling Web Proxy

Ensure that you do not have a web proxy enabled on your computer.

Go to the *Control Panel* and click on *Internet Options*. Select the *Connections* tab and click *LAN Settings* at the bottom. Make sure that the *Use Proxy Server* option is unchecked.

4

RUNNING THE SETUP WIZARD

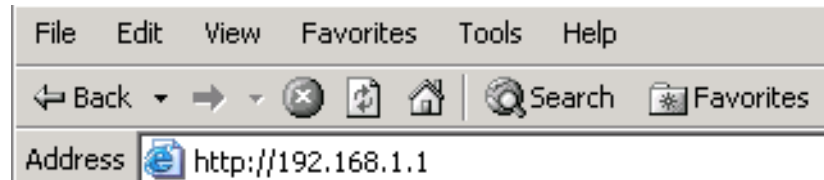
Accessing the Setup Wizard

The Router setup program is Web-based, which means that it is accessed through your Web browser (Netscape Navigator 4.7 or higher, Internet Explorer 5.0 or higher, or Mozilla 1.2.1 or higher).

To use the Setup Wizard:

- 1 Ensure that you have at least one computer connected to the Router. Refer to [Chapter 2](#) for details on how to do this.
- 2 Launch your Web browser on the computer.
- 3 Enter the following URL in the location or address field of your browser: **http://192.168.1.1** ([Figure 11](#)). The Login screen displays.

Figure 11 Web Browser Location Field (Factory Default)



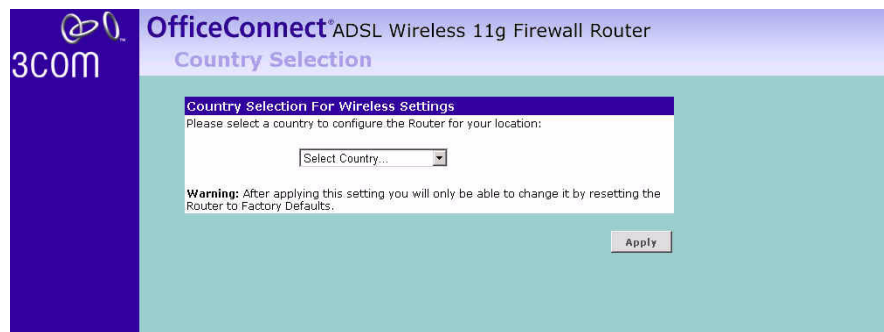
- 4 To log in as an administrator, enter the password (the default password is *admin*) in the *System Password* field and click *Log in* ([Figure 12](#)).

Figure 12 Router Login Screen



- 5 When you have logged in,
 - if you are logging in for the first time, the Country Selection screen will appear ([Figure 13](#)). Please select the country from the drop-down menu, and click *Apply*.

Figure 13 Country Selection Screen



The Wizard will then launch automatically (refer to [Figure 16](#)). You will be guided step by step through a basic setup procedure.

- if the Router has been configured previously before, the *Welcome* screen will appear ([Figure 14](#)). There are three tabs: Notice board, Password, and Wizard.

Figure 14 Welcome Screen

- Go to the *Notice Board* tab to see the current software information. To view the Web help, click the *Help* button.
- Go to the *Password* tab to change the password ([Figure 15](#)).
- Go to the *Wizard* tab to do a quick setup of the Router ([Figure 16](#)).

The password screen allows you to change the current password and set the login time limit to the Router's management interface.

Figure 15 Password Screen

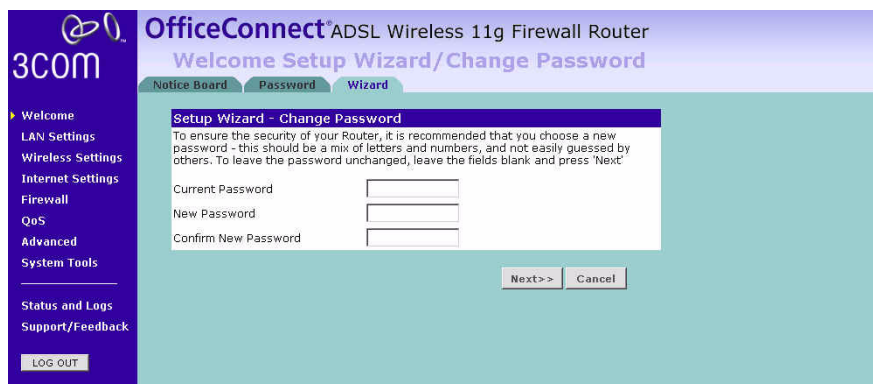
- 1 To change the current password, enter the password in the *Current Password* field.
- 2 Enter the new password in the *New Password* field, and enter it again in the *Confirm New Password* field.

- 3 Enter the time period in *Login Timeout* to set a maximum period of time for which the login session is maintained during inactivity (Default: 10 minutes).

Setup Wizard - Change Password

To ensure the security of your Router, it is recommended that you choose a new password - this should be a mix of letters and numbers, and not easily guessed by others. To leave the current password unchanged, leave the fields blank and click *Next*.

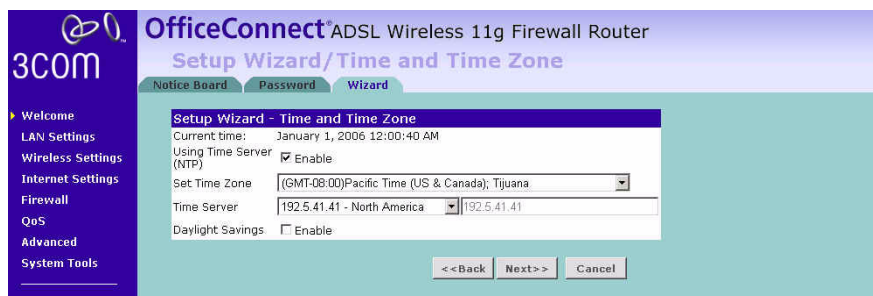
Figure 16 Change Password Screen



Setup Wizard - Time and Time Zone

The *Time and Time Zone* screen allows you to set up the time for the Router.

Figure 17 Time and Time Zone Screen



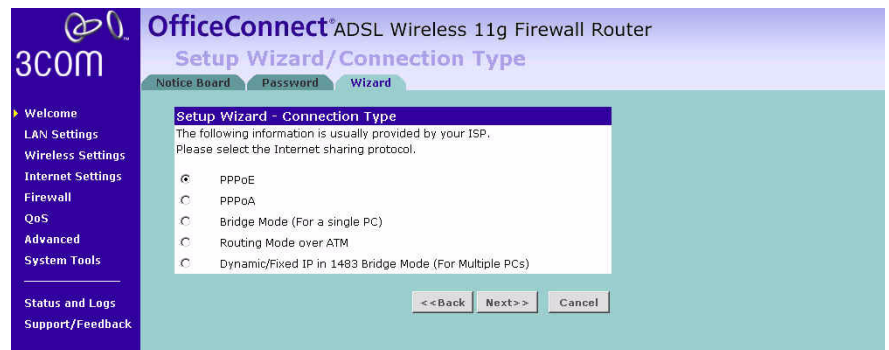
- 1 If you want to automatically synchronize the Router with a public time server, check the *Enable* box in the *Using Time Server* field.
- 2 Select the time zone in the *Set Time Zone* drop-down menu.
- 3 Select the desired servers from the *Time Server* drop-down menu.

- 4 Check the *Enable* box in the *Daylight Savings* field, if daylight savings applies to your area.
- 5 Click *Next*.

Setup Wizard - Connection Type

The *Connection Type* screen allows you to set up the Router for the type of Internet connection you have. Before setting up your connection type, have your account information from your ISP ready.

Figure 18 Connection Type Screen



Select a DSL mode from the following:

- *PPPoE* — PPP over Ethernet, providing routing for multiple PCs, see [page 32](#)
- *PPPoA* — PPP over ATM, providing routing for multiple PCs, see [page 33](#)
- *Bridge Mode (for a single PC)* — RFC1483 Bridged Mode, for single PCs only, see [page 34](#)
- *Routing Mode over ATM* — RFC1483 Routed Mode, for multiple PCs, see [page 34](#)
- *Dynamic/Fixed IP in 1483 Bridge Mode (for multiple PCs)*, see [page 35](#)

and click *Next*.



For further information on selecting a mode see "[Internet Settings](#)" on [page 54](#).

PPPoE Mode

To set up the Router for use with a PPP over Ethernet (PPPoE) connection, use the following procedure:

Figure 19 PPPoE Screen

The screenshot shows the 'Setup Wizard - Parameter Settings' screen for an OfficeConnect ADSL Wireless 11g Firewall Router. The interface includes a left-hand navigation menu with categories such as Welcome, LAN Settings, Wireless Settings, Internet Settings, Firewall, QoS, Advanced, System Tools, Status and Logs, and Support/Feedback. The main content area is titled 'Setup Wizard - Parameter Settings' and contains a form with the following fields: Username, Password, Retype Password, VPI/VCI (with a slash separator), and Encapsulation (a dropdown menu currently set to 'VC MUX'). At the bottom right of the form are three buttons: '<- Back', 'Next >', and 'Cancel'.

- 1 Enter your user name in the *Username* field.
- 2 Enter your password in the *Password* field.
- 3 Re-type your password in the *Retype Password* field.
- 4 Enter your VPI and VCI information in the *VPI/VCI* fields.
- 5 Select the encapsulation type (LLC or VC MUX) in the *Encapsulation* drop-down menu. This information should be provided to you by your ISP.
- 6 Check all of your settings, and then click *Next*.
The LAN Settings screen will then be displayed (refer to [Figure 24](#)).

PPPoA Mode

To set up the Router for use with a PPP over ATM (PPPoA) connection, use the following procedure:

Figure 20 PPPoA Screen

The screenshot displays the 'Setup Wizard - Parameter Settings' screen for an OfficeConnect ADSL Wireless 11g Firewall Router. The interface includes a left-hand navigation menu with options like 'Welcome', 'LAN Settings', 'Wireless Settings', 'Internet Settings', 'Firewall', 'QoS', 'Advanced', 'System Tools', 'Status and Logs', and 'Support/Feedback'. The main content area is titled 'Setup Wizard - Parameter Settings' and contains the following fields and instructions:

- Username:** A text input field.
- Password:** A text input field.
- Retype Password:** A text input field.
- VPI/VCI:** Two adjacent text input fields, with the first containing '0' and the second containing '38'.
- Encapsulation:** A dropdown menu currently set to 'VC MUX'.

At the bottom of the form area, there are three buttons: '<< Back', 'Next >>', and 'Cancel'.

- 1 Enter your user name in the *Username* field.
- 2 Enter your password in the *Password* field.
- 3 Re-type your password in the *Retype Password* field.
- 4 Enter your VPI and VCI information in the *VPI/VCI* fields.
- 5 Select the encapsulation type (LLC or VC MUX) in the *Encapsulation* drop-down menu. This information should be provided to you by your ISP.
- 6 Check all of your settings, and then click *Next*.
The LAN Settings screen will then be displayed (refer to [Figure 24](#)).

Bridge Mode (for a single PC)

To set up the Router for use with an RFC 1483 bridged connection, use the following procedure:

Figure 21 Bridged Mode Screen

- 1 Enter your VPI and VCI information in the *VPI/VCI* fields.
- 2 Select the encapsulation type (LLC or VC MUX) in the *Encapsulation* drop-down menu. This information should be provided to you by your ISP.
- 3 Check all of your settings, and then click *Next*.
The LAN Settings screen will then be displayed (refer to [Figure 24](#)).

Routing Mode over ATM

To set up the Router for use with an RFC 1483 routed connection, use the following procedure:

Figure 22 Routing Mode Screen